

102722-2

May Ellis Park "Park Plan"

May Ellis Park
 730 Covered Bridge Road
 Wimer, Oregon

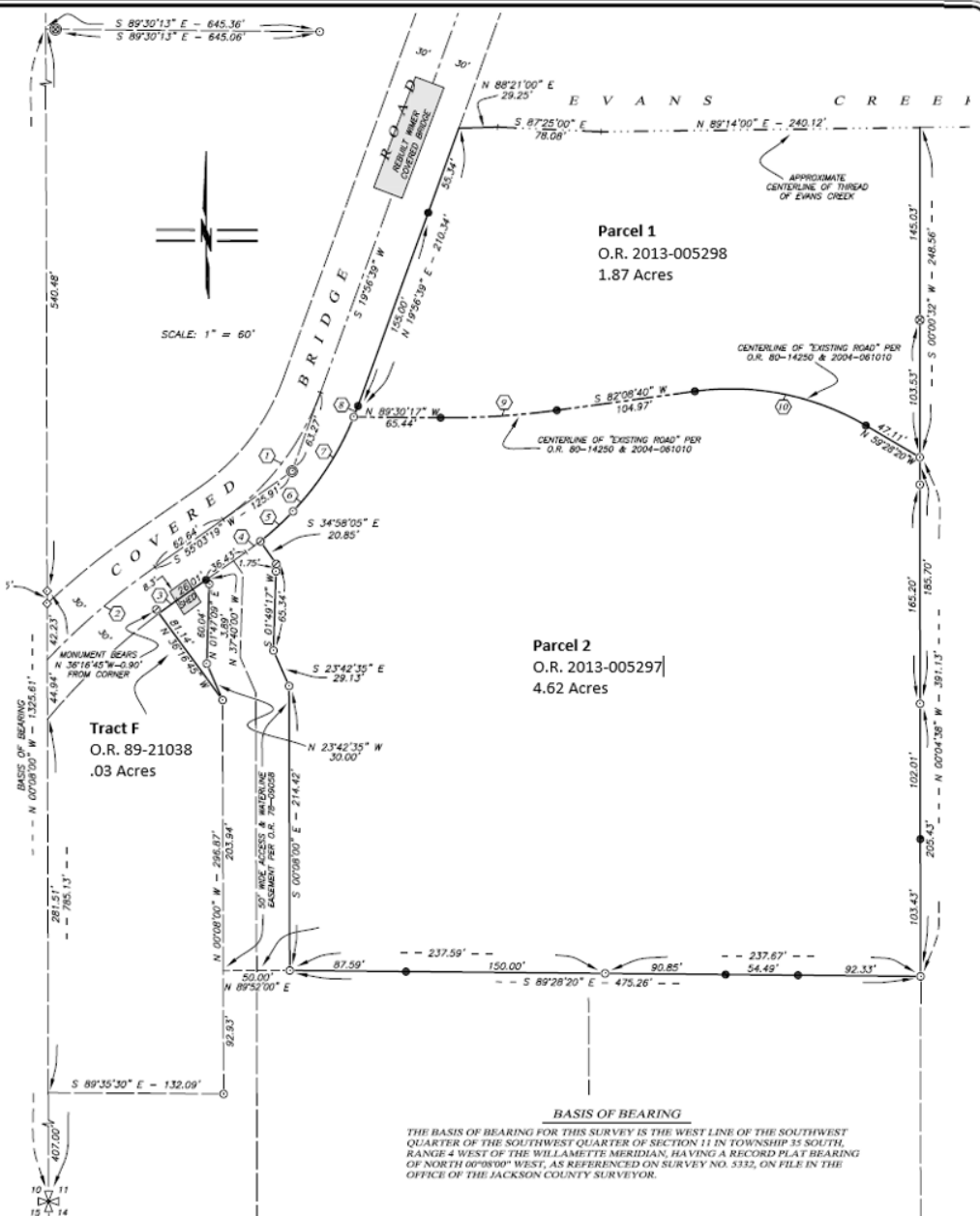
Deed Restriction
 "The property above described shall be used, in perpetuity, as public open space, a wildlife preserve, and nature area, and for recreational purposes of a purely passive nature."

- Acceptable Park Improvements**
- Parcel 1
 - Public Open Space
 - Nature Area
 - Passive Recreation
 - Optional Improvements:
 - Stairs from Bridge to Park
 - Storage Building
 - Picnic Table & Trash Container
 - Limited Parking for 4 or 5 vehicles

- Parcel 2**
- Wildlife Preserve
 - Nature Area
 - No vehicular access

- Optional Improvements:**
- Walking Paths, Sitting Areas

- Tract F**
- Optional Improvement: Parking in lieu of building



Approximate Map Area: Tax Lots 2300, 2500, 2600, 2700, 2800 & 3200